

A review: Thermoelectric generators in renewable energy

Raşit Ahıska*, Hayati Mamur**‡

* Department of Physics, Faculty of Science, Gazi University, Ankara, Turkey

** Department of Electrical and Electronics Engineering, Faculty of Engineering, Cankiri Karatekin University, Cankiri, Turkey

(ahıska@gazi.edu.tr, hmamur@karatekin.edu.tr)

‡ Corresponding Author; Hayati Mamur, Department of Electrical and Electronics Engineering, Faculty of Engineering, Cankiri Karatekin University, 18100, Cankiri, Turkey, Tel: +90 376 2131195, hmamur@karatekin.edu.tr

Received: 19.12.2013 Accepted: 28.01.2014

Abstract- In this paper, the role of thermoelectric generators (TEGs) in conversion of geothermal energy into electrical energy has been presented. In addition, the structures of the TEGs used in the electrical energy production have been reported. The TEGs directly convert the thermal energy into the electrical energy. The thermoelectric (TE) technology is used in both the air-conditioning and the electrical energy generation. Also, the TE technology is eco-friendly as it has no greenhouse gas emissions, durable due to the absence of moving parts and is silent. However, the conversion efficiency of the thermoelectric modules (TEMs) used commercially is less than about 10%.

Keywords Renewable energy, energy efficiency, energy production, thermoelectric module, thermoelectric generator.

1. Introduction

Thermoelectric (TE) technology is used both the electricity generation and the air-conditioning. TE power generators convert the thermal energy into the electrical energy directly. Moreover, the TE technology is environmentally friendly. It has no moving parts and is long-lived. Although their efficiency is about 5–10%, considering reuse of waste energy gain, their efficiency cannot be ignored.

The TE is defined as the science and technology related to the electricity generation and the cooling with the TE method. The technology uses the Seebeck and Peltier effects. Basic science of it is referenced to the theory of thermoelement (thermocouple). The basic structure of a thermoelectric module (TEM) using in the electricity generation has a thermoelement. The thermoelement forms from *p*- and *n*-type semiconductors connecting in series as electrical. Then, a large number of the thermoelements are electrically connected in series to increase the operating voltage and are thermally connected in parallel to increase the thermal conductivity. In the end, a TEM is occurred [1-5].

Devices containing the TEM are classified in two groups as depending on the effects in the TEMs; (1) the

thermoelectric generators (TEGs) and (2) the thermoelectric coolers (TECs). The TEGs using Seebeck effect convert the thermal energy between two surfaces of the TEM into the electrical energy. TECs using Peltier effect convert the electrical energy applied from the ends of the TEM into the temperature difference [6-11].

TEGs are environmentally friendly in the electricity production for using waste heat as the input source, and they allow the efficient use of energy [12,13]. Despite the low productivity of the TEGs being renewable of energy input source increases the economic viability of the systems. Many studies related to increased efficiency and economic feasibility have been conducted [1,14]. There is no a moving part of a TEG. It is fully scalable, highly reliable and silent [12,15]. In recent years, studies on TEGs such as industrial plants, geothermal areas, automobile engines, computers and the human body on the production electrical energy with the TEGs have focused on the recycling of waste heat [2-3].

When a TEG is compared to other renewable energy resources, the most significant disadvantage is the low semiconductor figure-of-merit used (Z) in the TEGs and quality factor (figure-of-merit, Z) [16-17]. Until recently, the TE applications limited due to the ZT (< 1) values. Since the early 1990s, the ZT of TEMs has been increased from 1 to 2. So, the TEG applications have rapidly increased [3].

2. Basic Theory of TEGs

2.1. Structure of the TEG

TEGs are semiconductor devices [18]. It is tried to establish a connection between thermocouples and TEGs. However, there are big differences between them. Exception of Seebeck effect, thermocouples and TEGs does not show a similarity. Thermocouples are made of two different metals. It is given a T-type thermocouple is made of copper and constantan, in Figure 1. When the junction point of thermocouple is kept in the cold or heat and compared to the ambient temperature, it produces a small voltage $40 \mu\text{V}/^\circ\text{C}$ in per one degree temperature change by Seebeck effect. For this reason, thermocouples are usually preferred as the temperature sensor in coolers, heaters and air conditioners where measurement of the temperature is needed [1].

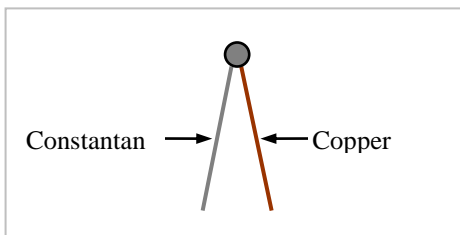


Fig. 1. A T-type thermocouple

On the other hand, TEGs are formed by connecting electrically in series and thermally in parallel. In the produced voltage, thermoelements is higher than thermocouples as depending on the temperature difference. For example, Seebeck coefficient of a thermoelement fabricating from Bi_2Te_3 semiconductor is $560\text{--}640 \mu\text{V}/^\circ\text{C}$ and its structure is very different than a thermocouple [19,20]. The structure of a thermoelement is given in Figure 2. The thermoelement forms from connection of an end of *p*- and *n*-type semiconductors. When a temperature difference between surfaces is created, a voltage *V* is produced between its open ends. The value of the voltage depends on the temperature difference between two surfaces and Seebeck constant. The voltage value is given following equation by:

$$V = \alpha(T_H - T_C), \tag{1}$$

where *V* is the voltage of the thermoelement, T_H is the hot side temperature of thermoelement, T_C is the cold side temperature of the thermoelement and the α is the Seebeck coefficient of the thermoelement [3].

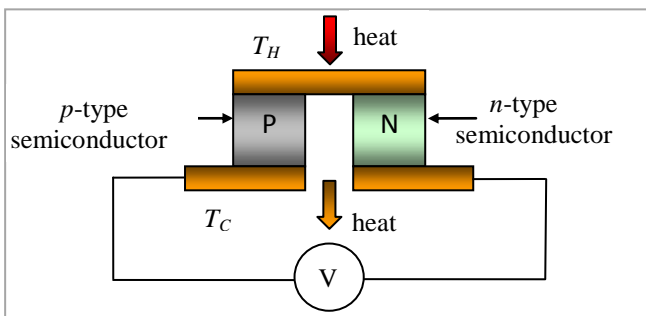


Fig. 2. The structure of a thermoelement

A TEM consists of a large number of thermoelements [21–22]. The structure of a TEM in the generator mode is given, in Figure 3.

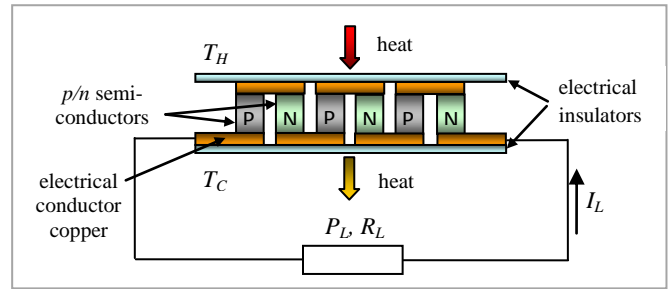


Fig. 3. A TEM in the generator mode

Otherwise, a TEG system consists of three parts; a heater block, a colder block, and a TEM [16,23]. When the high temperature is applied to one side of the TEG, the other side is kept at the lower temperature. As a result of the difference in the temperature between the two sides, the end of the TEG generates an electrical voltage *V*. When the end of the TEG is connected to an external load R_L , a current *I* flows through the load. The electrical power *P* and the current obtained from the TEG depend on the temperature difference ΔT , the properties of the semiconductor materials and the values of the external load resistance R_L [24].

2.2. TEG Efficiency

The efficiency of a thermoelectric generator is given by following equation [3]:

$$\eta = \frac{\text{Energy Supplied to the Load}}{\text{Heat Energy Absorbed at Hot Junction}}, \tag{2}$$

where *the energy supplied to the load* is the output power of the TEG and *the heat energy absorbed at the hot junction* is the input power of the TEG.

A semiconductor power measurement used in a TEG is given as the figure of merit (*ZT*). The semiconductor power measurement of the figure of merit *ZT* is given by:

$$ZT = \frac{\alpha^2}{KR} T, \tag{3}$$

where *T* is the temperature (Kelvin), α ($\alpha = \alpha_{pn} = |\alpha_p| + |\alpha_n|$) is the Seebeck coefficient ($\text{V}/^\circ\text{C}$), *K* is the thermal conductivity (W/mK) and *R* is the electrical resistance (Ω) [19]. In addition, the efficiency is given as a function of the *ZT* and the temperature difference between the surfaces ΔT ($T_H - T_C$) in the TEG. In recent years, *ZT* of the produced TEGs is higher. Therefore, it has been a significant increase in efficiency [25,26].

The TEG efficiency is also expressed in terms of Carnot efficiency. Carnot efficiency is given by following equation:

$$\eta_{\max} = \frac{(T_H - T_C)}{T_H} \frac{\sqrt{1 + ZT_M} - 1}{\sqrt{1 + ZT_M} + \frac{T_C}{T_H}}, \tag{4}$$

where T_M is the average TEG temperature $(T_H + T_C) / 2$, T_H is the TEG hot side temperature and T_C is the TEG cold side temperature [25,27,28].

Further, the efficiency is a function of the TEG hot side temperature T_H , the TEG cold side temperature T_C , the temperature difference between hot and cold surfaces ΔT , the quality factor of materials (Z), and the ratio of resistance R_m of the TEG with added the load resistance R_L at the same time. It is given by:

$$\eta = \frac{mZ\Delta T}{\{(1+m)^2 + Z[(m+0.5)T_H + 0.5T_C]\}} \quad (5)$$

where, m is the resistance ratio between the load R_L and the internal resistance R_{in} ($m = R_L / R_{in}$) [15].

The highest value of the voltage produced by the TEG is when the TEGs ends open. The open circuit voltage V_{OC} is expressed as following equation:

$$V_{OC} = N(\alpha_p - \alpha_n)(T_H - T_C). \quad (6)$$

The TEG open circuit voltage V_{OC} is proportional directly with the number of thermoelements N , the temperature difference $(T_H - T_C)$ between hot side temperature and cold side temperature of the TEG, p -type (α_p) and n -type (α_n) material Seebeck coefficients [25].

2.3. TEG Output Characteristics

The produced power P_L on the load R_L connected to a single thermoelement is given by:

$$P_L = I_L V_L = I_L (\alpha \Delta T - I_L R_{in}) = \alpha^2 \Delta T^2 \frac{R_L}{(R_{in} + R_L)}, \quad (7)$$

where P_L is the output power produced on the load of the TEG, I_L is the electric current flowing through the load, V_L is the generated voltage on the load by the TEG, α ($\alpha = \alpha_{pn}$) is the Seebeck coefficient difference between α_p and α_n ($\alpha = \alpha_{pn} = |\alpha_p| + |\alpha_n|$), ΔT is the temperature difference between T_H and T_C ($\Delta T = T_H - T_C$), R_{in} is the TEG electrical resistance, R_L is the TEG load resistance. When the load resistor R_L is equal to the TEG internal resistor R_{in} , the TEG is on matched load condition generating the maximum output power given by [29,30]:

$$P_{Lmax} = \frac{\alpha^2 \Delta T^2}{4R_{in}}. \quad (8)$$

The voltage-current and calculated power characteristics of an Altec-GM-1 TEG simulated in the Matlab/Simulink are given as depending on the temperature differences between the surfaces of TEG at the temperature difference $\Delta T = 100$ °C, in Figure 4. The experimental measured values of voltage, current, power are given in Figure 5 for the Altec-GM-1 TEG at the different temperature ranges. In Figure 5, the dashed line shows maximum power points located at the half of the open circuit voltage V_{OC} . The TEG internal resistance R_{in} is equal to the TEG load resistor R_L , in these points. When the TEG ends are open circuit, maximum voltage V_{OC} is obtained. When its ends are short circuit,

maximum current I_{SC} is obtained from the TEG. The power P obtained from the TEG varies as depending on the connected to the load value. Also, when the TEG internal resistor R_{in} and the load resistor R_L is equal, maximum power is obtained. The TEG current, voltage and power changes are given together at different temperature ranges, in Figure 6 [6,31–33].

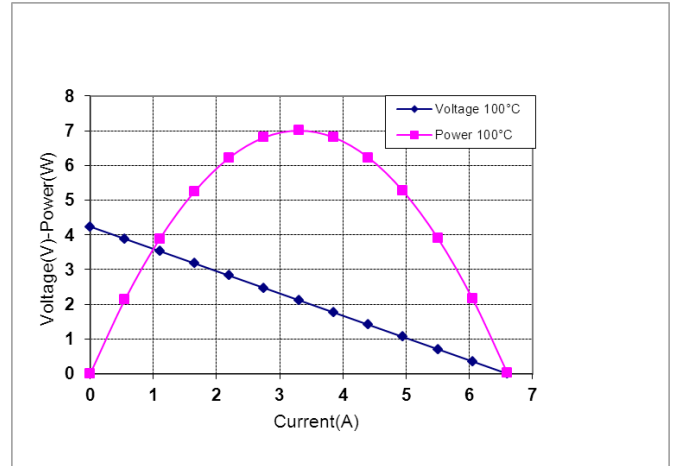


Fig. 4. The voltage-current and calculated power characteristics of an Altec-GM-1 TEG simulated in the Matlab/Simulink at the temperature difference $\Delta T = 100$ °C

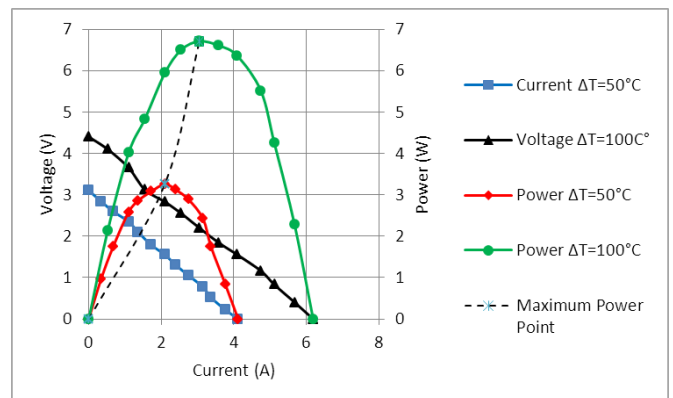


Fig. 5. The experimental measured values of voltage, current, power for Altec-GM-1 TEG at the different temperature ranges

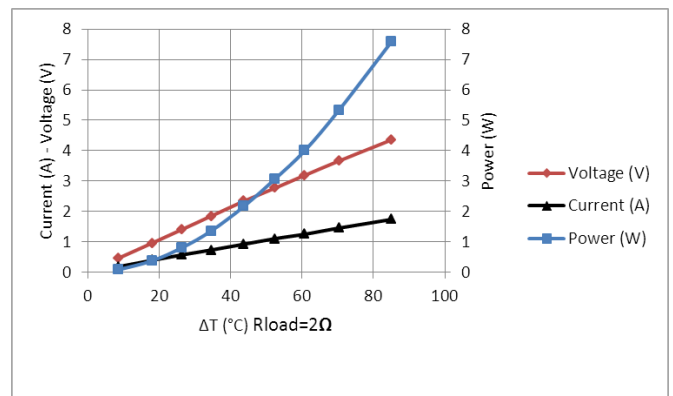


Fig. 6. Current, voltage, and power curves for Altec-GM-1 TEG at the various temperature differences

A TEG can be modeled the open circuit voltage source V_{OC} and the internal resistor R_{in} obtained from dividing (V_{OC}/I_{SC}) the short circuit current I_{SC} of the open circuit voltage V_{OC} . In here, the open circuit voltage V_{OC} is proportional to the Seebeck constant and the temperature difference ($V_{OC} = \alpha\Delta T$). The TEG short circuit current I_{SC} is the current when the TEG ends are short circuited at the certain temperature difference ΔT . The equivalent electrical circuit associated with using as the TEG of a TEM is given in Figure 7. The power value obtained from the TEG changes as depending on the load resistor value [34–36].

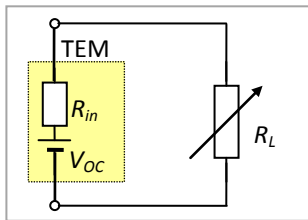


Fig. 7. The equivalent electrical circuit for the measurement voltage and the output power of the TEM

3. TEG Types and Application Areas

3.1. TEG Types

The TE power generation technology aims to convert thermal energy into electrical energy. In the production of electrical energy, the types of TEGs are (1) large-bulk TEM that are preferred for high-power applications and (2) the thin film TEG (micro TEG - μ TEG) that are preferred for low-power applications. The μ TEGs require less thickness than the $50\ \mu m$ thickness TE elements. Thickness of commercially available and widely used the bulks TEGs usually are over $500\ \mu m$. When it is below of this value, the production efficiency decreases considerably [13,37,38].

The μ TEGs is smaller and thinner than the bulk TEGs. Therefore, they take up less space. They are seen that μ TEGs can directly integration industry-standard production methods as promising. The thin films in the μ TEG are the segment layer materials thickness from one nm to a few nm . The thin film TE materials can be enlarged with different ways [39,40]. The μ TEGs mainly consists of several kinds of structure such as swiss roll, film and thermopile. On the other hand, thermopile has relatively higher power density and therefore is more valuable for researching [41]. The bulk integrated TEG produces the highest output power and voltage. It easily produces sufficient power at a high enough voltage to power a variety of low power sensors even when harvesting energy from the temperature differences as low as $5\ ^\circ C$. Also, the μ TEGs are more efficient for applications used acquisition of electrical energy at the high temperature difference [25,42].

For the performances of the μ TEG and the bulk TEG, three factors turn out to be crucial: (1) the increase of the thermal resistance of the generator, (2) the decrease of the thermal resistance and (3) finally minimizing the electrical resistance [37,43].

TE materials used in the TEMs shows a large variety. These are TEM materials including different material systems from semiconductors to ceramic, different crystal shapes from mono crystal, polycrystalline to nano-composites, and different sizes from bulk, film and wire to cluster [44,45]. Improving of the figure of merit ZT of the TE materials is quite difficult due to the basic properties of the materials. In recent years, some studies on improving of the figure of merit ZT of the TEM materials is moving towards the use of nanostructured materials [46]. The nanostructured materials such as quantum wells (QW) [47], superlattices [48], nanowires [49,50], and nano grains [51] are generally used as nano structured materials in the production of new TEGs. The TE conductivity can be quite reduced owing to the nanostructured materials [52].

The new nano materials called QW are made up of 10 nm thick silicon and SiGe films. These have contributed to improving of the TE figure of merit ZT . Thermoelements with the figure of merit ZT greater than 3 have been obtained with the materials at room temperature [48]. This value is a significant improvement compared to the bulk TEGs with the figure of merit ZT less than 1 [53]. Conversion efficiency of TEGs made of the QW materials is approaching up to 20% [54].

In recent years, development efforts on the nano structured TE materials from nanocrystals to nanowires show great advantages, compared to the performance of the bulk crystal with the same chemical composition on account of dramatically reduced thermal conductivity. However, the critical gaps still remain. Therefore, this restricts practical manufacture, scalable, and wide deployment of the nano TE devices [55,56].

Energy conversion technology require several conditions such as (1) the simplicity of the process and scalability of materials, (2) the economical sustainment in the manufacture and recycling, (3) the compatibility and integrality with existing manufacture infrastructure, and (4) performance improvability. These requirements determine the direction of future research for the nanostructured TE [55].

3.2. TEG Application Areas

As societies evolve, energy requirements are increasing. Environment pollution due to the used fossil energy sources has increased people's susceptibility to environmental protection. Also, technological advances raised demand for energy. As a result of this, the importance of the energy efficiency has increased. In addition, the developments caused the international energy crisis have been one of the hot research topics to use new and clean energy resources [57,58]. One of the renewable energy sources is the geothermal. This was a source of renewable geothermal energy. One of the devices converting geothermal energy into electrical energy is TEG. In generation of electrical energy, they do not use greenhouse gas, therefore they are environmentally friendly. For this reason, TEGs have been increasingly attracting attention because of largely meeting on the needs of the people as green and flexible electrical power source [59–62]. During temperature difference in the

environment of TEG, they produce electrical energy every time. Because of this feature, they are not like solar panels (PV), day-night, rain-sunny days do not prevent to the production of electricity [63].

The energy acquisition from the TEGs has been an important part for self-powered or a low-power integrated systems. For example, Topal et al. [64], in a conducted study, vibration based a μ TEG was been developed at Middle East Technical University Micro ElectroMechanical Systems Laboratories (METU MEMS). As a result of researches, they concluded that TE production is conveniently a potential energy source in the conversion of waste heat into electricity.

Some examples including studies in areas of use TEGs can be given as follows; for the self-powered wireless sensors, it can replace the battery in the areas where no electricity is [65–67], the conversion of solar energy directly into electricity and grid on/off systems [68,69], the biomedical systems using the difference between human body temperature and the ambient temperature [70–72], telemetry systems that require less energy needs [64,73,74], waste heat recovery in the internal combustion engines [75–77], electrical energy generation from overheated roads in the areas where no electric lines are, and use of warning systems [78], self-powered sensors [79,80], the acquisition of grid off energy [81,82], in aerospace [83], and geothermal waste heat recovery [20]. TEGs are also used extensively instead of batteries to provide power in the small electronic circuits powerful applications [84].

Torfs et al. [70], in a conducted study, a wearable, wireless 2-channel electroencephalography (EEG) system had been realized which functions fully autonomously, without any batteries. It was fully powered by human body heat using a TEG which can produce over 2 mW at 23 °C. At the same time, the solar panel energy strengthen had been added as the hybrid system.

Leonov et al. [58,85] combined the TEGs with the PV cells. The main purpose of the work was in the devices that can be worn PV cells and the TEGs, especially when used on clothes. In their study, an optimized TEG generated more power than PV cell in the each unit field of human body They produced a hybrid energy recovery, as a primary objective, to avoid coldness caused by TEGs in the cold weathers in 2008. The fulfilled hybrid system brought about two parallel electrical circuits; a TEG and a PV cell.

Ekuakille et al.[71], in their study, a special recovery circuit designed and applied for biomedical hearing aid. Their target was that a TEG taking the energy from warm body tissue produces in order to provide a resource for biomedical hearing for people with difficulty hearing. Their study was shown the demonstration of a TEG able to extract warmth from body tissue to supply a hearing aid. It was not convenient to feed directly the hearing aids. However was necessary to pass through a conditioning circuit, as regulator, by adding batteries for backup.

Kari et al. [76] were carried out the exhaust energy cycle by a TEG for two-state study. They presented predictions of generated power and fuel saving by TEG placed in the exhaust outlet of a sport vehicle. They obtained for

generators using either commercially available Bismuth Telluride (Bi_2Te_3) or QW thermoelectric material. The increase in power between the QW and Bi_2Te_3 based TEGs was about three times for the sports utility vehicle and seven times for the compressed-natural-gas fueled engine generator setting generator under the same simulation conditions.

Ahiska et al. [17] designed a microcontroller controlled TEG which transforms geothermal energy, one of the renewable energy sources, to directly electrical energy, and then they tested the system and its performance analysis was examined. In their system, energy transformation was provided via the Seebeck effect in the thermoelectric modules. Since changeable DC voltage depending on temperature difference was obtained by the thermoelectric modules. Their studies were given in Figure 8 and 9.



Fig. 8. Microcontroller controlled geothermal TEG



Fig. 9. A portable geothermal TEG of 100W

3.3. DC-DC Converters for TEGs

When the temperature difference between the surfaces of TEG is changed, the output voltage of the TEG varies accordingly. It is required that standard voltage give to the loads or the electronic circuits connected to the ends of TEG. In order to provide this standard voltage, TEGs need to the DC-DC converters.

TEGs are connected into the serial and parallel to achieve sufficient power [86,87]. In a DC-DC converter, a power management circuit extracts power as many as possible from the TEG system connected into the serial and

parallel and it generates the voltage needed by the electronic circuit. The open-circuit output voltage V_{OC} of the TEG varies depending on the temperature difference ΔT between the surfaces of TEG. The voltage V_i , which is at the entrance of DC-DC converter, affects the internal impedance R_{in} of TEG. In order to transfer a maximum power to the output, the impedance matching is needed. In this case, the input voltage V_i of the DC-DC converter is only half of V_{OC} . V_i is determined by the output voltage V_o and the conversion factor. Since the output of DC-DC converter is connected to a battery. V_o is constant within a short time interval. Therefore, the conversion factor of a DC-DC converter can be adapted to reach matching for the TEG.

Maximum Power Point Tracking (MPPT) algorithms have been developed to achieve this goal [83]. In addition, the controller using in the DC-DC converters requires two operation modes; (1) the MPPT, (2) the power comparator [88–90].

4. Conclusion

TEGs are the devices converting to the geothermal energy into the electrical energy. The electrical energy generation from the TEGs is based on Seebeck effect. As long as to be the temperature difference between the surfaces of the TEG, the TEG generates the electrical energy. Moreover, TEGs are environmentally friendly and have no moving parts. In addition, they are long-lived and work silently, scalable, and no greenhouse gas emissions. On the other hand, their biggest disadvantage is the low conversion efficiency $< 10\%$. However, the low conversion efficiency can be underestimated because of using at the recovery of energy of TEGs. The output voltage of TEGs needs the regulation because it varies continuously with the temperature difference. As long as the energy demand increases continuously in the world, the environmental concerns in connection with today used energy sources continue, the need for renewable energy sources will be continuous and the TEGs continue to be one of the hot research topics.

References

- [1] Rowe DM. Review thermoelectric waste heat recovery as a renewable energy source. *I J E S P* 2006; 1: 13–23.
- [2] Carlson EJ, Strunz K, Otis BP. A 20 mV input boost converter with efficient digital control for thermoelectric energy harvesting. *IEEE J Solid–St Circ* 2010; 45: 741–750.
- [3] Gould CA, Shammass NYA, Grainger S, Taylor I. A comprehensive review of thermoelectric technology, micro-electrical and power generation properties. In: *Proceedings of the 26th International Conference on Microelectronics*; 11–14 May 2008; NIS, Serbia. pp. 329–332.
- [4] Ramadass YK, Chandrakasan AP. A battery-less thermoelectric energy harvesting interface circuit with 35 mV startup voltage. *IEEE J Solid–St Circ* 2011; 46: 333–341.
- [5] Karabetoglu S, Sisman A, Ozturk ZF, Sahin T. Characterization of a thermoelectric generator at low temperatures. *Energ Convers Manage* 2012; 62: 47–50.
- [6] Ahıska R, Mamur H, Uliş M. Modeling and experimental study of thermoelectric module as generator. *J Fac Eng Archit Gaz* 2011; 26: 889–896. (article in Turkish with an abstract in English).
- [7] Hodes M. Optimal pellet geometries for thermoelectric power generation. *IEEE T Compon Pack T* 2010; 33: 307–318.
- [8] Huang MJ, Chou PK, Lin MC. Thermal and thermal stress analysis of a thin-film thermoelectric cooler under the influence of the Thomson effect. *Sensor Actuat A–Phys* 2006; 126: 122–128.
- [9] Wang W, Wang Z, Tang J, Yang S, Jin H, Zhao GL, Li Q. Seebeck coefficient and thermal conductivity in doped C_{60} . *J Renew Sustain Ener* 2009; 1: 104–121 (2009).
- [10] Goldsmid HJ, Nolas GS. A review of the new thermoelectric materials. In: *Proceedings of the 20th International Conference on Thermoelectrics*; 08–11 June 2001; Beijing, China. pp. 1–6.
- [11] Ahıska R, Mamur H. A test system and supervisory control and data acquisition application with programmable logic controller for thermoelectric generators. *Energ Convers Manage* 2012; 64: 15–22.
- [12] Ahıska R, Mamur H., Design and implementation of a new portable thermoelectric generator for low geothermal temperatures, *IET Renew Power Gener*, 2013; 7, 700-706.
- [13] Hsu CT, Yao DJ, Ye KJ, Yu B. Renewable energy of waste heat recovery system for automobiles. *J Renew Sustain Ener* 2010; 2: 105–116.
- [14] Nuwayhid RY, Shihadeh A, Ghaddar N. Development and testing of a domestic woodstove thermoelectric generator with natural convection cooling. *Energ Convers Manage* 2005; 46: 1631–1643.
- [15] Tsai HL, Lin JM. Model building and simulation of thermoelectric module using Matlab/Simulink. *J Electron Mater* 2009; 39: 2105–2111.
- [16] Riffat SB, Ma X. Review thermoelectrics: a review of present and potential applications. *Appl Therm Eng* 2003; 23: 913–935.
- [17] Ahıska R, Dişlitaş S. Microcontroller based thermoelectric generator application. *J Fac Eng Archit Gaz* 2006; 19: 135–141.
- [18] Doms I, Merken P, Van Hoof C. Comparison of DC–DC–converter architectures of power management circuits for thermoelectric generators. In: *Proceedings of the 2007 European Conference on Power Electronics and Applications*; 2–5 September 2007; Aalborg, Denmark. pp. 1–5.
- [19] Glatz W, Schwyter E, Durrer L, Hierold C. Bi_2Te_3 -based flexible micro thermoelectric generator with

- optimized design. *J Microelectromech S* 2009; 18: 763–772.
- [20] Niu X, Yu J, Wang S. Experimental study on low-temperature waste heat thermoelectric generator. *J Power Sources* 2009; 188: 621–626.
- [21] Singh R, Tundee S, Akbarzadeh A. Electric power generation from solar pond using combined thermosyphon and thermoelectric modules. *Sol Energy* 2011; 85: 371–378.
- [22] Ahıska R, Dişlitaş S. Computer controlled test system for measuring the parameters of the real thermoelectric module. *Energ Convers Manage* 2011; 52: 27–36.
- [23] Vieira JAB, Mota AM. Thermoelectric generator using water gas heater energy for battery charging. In: *Proceedings of the 2009 IEEE Multi-conference on Systems and Control*; 8–10 July 2009; Saint Petersburg, Russia. pp. 1477–1482.
- [24] Khattab NM, Shenawy ETE. Optimal operation of thermoelectric cooler driven by solar thermoelectric generator. *Energ Convers Manage* 2006; 47: 407–426.
- [25] Bierschenk J. Optimized thermoelectrics for energy harvesting applications. In: *Proceedings of the 17th International Symposium on the Applications of Ferroelectrics ISAF 2008*; 23–28 February 2008; Santa Re, NM, USA. pp. 1–4.
- [26] Becker T, Kluge M, Schalk J, Otterpohl T, Hilleringmann U. Power management for thermal energy harvesting in aircrafts. In: *Proceedings of the IEEE Sensors 2008 Conference*; 26–29 October 2008; Lecce, Italy. pp. 681–684.
- [27] Yoshida K, Tanaka S, Tomonari S, Satoh D, Esashi M. High-energy density miniature thermoelectric generator using catalytic combustion. *J Microelectromech S* 2006; 15: 195–203.
- [28] Min G, Rowe DM. Conversion efficiency of thermoelectric combustion systems. *IEEE T Energy Convers* 2007; 22: 528–534.
- [29] Ferrari M, Ferrari V, Guizzetti M, Marioli D, Taroni A. Characterization of thermoelectric modules for powering autonomous sensors. *IEEE T Instrum Meas* 2009; 58: 99–107.
- [30] Kim RY, Lai JS, York B, Koran A. Analysis and design of maximum power point tracking scheme for thermoelectric battery energy storage system. *IEEE T Ind Electron* 2009; 56: 3709–3716.
- [31] Cho S, Kim N, Park S, Kim S. A coreless maximum power point tracking circuit of thermoelectric generators for battery charging systems. In: *Proceedings of the IEEE Asian Solid-State Circuits Conference*; 8–10 November 2010; Beijing, China. pp. 1–4.
- [32] Nagayoshi H, Kajikawa T. Mismatch power loss reduction on thermoelectric generator systems using maximum power point trackers. In: *Proceedings of the 25th International Conference on Thermoelectrics*; 6–10 August 2006; Vienna, Austria. pp. 210–213.
- [33] Kim RY, Lai JS. Optimal design of adaptive maximum-power-point tracking algorithm for thermoelectric based battery energy storage system. In: *Proceedings of the 34th Annual Conference of IEEE Industrial Electronics, Orlando*; 10–13 November 2008; Florida, USA. pp. 861–866.
- [34] Navone C, Soulier M, Testard J, Simon J, Caroff T. Optimization and fabrication of a thick printed thermoelectric device. *J Electron Mater* 2010; 40: 789–793.
- [35] Champier D, Bedecarrats JP, Rivaletto M, Strub F. Thermoelectric power generation from biomass cook stoves. *Energy* 2010; 35: 935–942.
- [36] Lineykin S, Ben-Yaakov S. Modeling and analysis of thermoelectric modules. *IEEE T Ind Appl* 2007; 43: 505–512.
- [37] Glatz W, Hierold C. Flexible micro thermoelectric generator. In: *Proceedings of the IEEE 20th International Conference on Micro Electro Mechanical Systems*; 21–25 January 2007; Kobe, Japan. pp. 89–92.
- [38] Glatz W, Schwyter E, Durrer L, Hierold C. Bi_2Te_3 -based flexible micro thermoelectric generator with optimized design. *J Microelectromech S* 2009; 18: 763–772.
- [39] Williams NE, Silva H, Gokirmak A. Finite element analysis of scaling of silicon micro-thermoelectric generators to nanowire dimensions. *J Renew Sustain Ener* 2012; 4: 110–118.
- [40] Huesgen T, Woias P, Kockmann N. Design and fabrication of MEMS thermoelectric generators with high temperature efficiency. *Sensor Actuat A-Phys* 2008; 145–146: 423–429.
- [41] Schwyter E, Glatz W, Durrer L, Hierold C. Flexible micro thermoelectric generator based on electroplated $\text{Bi}_{2+x}\text{Te}_{3-x}$. In: *Proceedings of the Symposium on Design Test Integration and Packaging of MEMS/MOEMS*; 9–11 April 2008; Nice, France. pp. 46–48.
- [42] Gou X, Xiao H, Yang S. Modeling, experimental study and optimization on low-temperature waste heat thermoelectric generator system. *Appl Energ* 2010; 87: 3131–3136.
- [43] Francioso L, Pascali CD, Farella I, Martucci C, Creti P, Siciliano P, Perrone A. Flexible thermoelectric generator for ambient assisted living wearable biometric sensors. *J Power Sources* 2011; 196: 3239–3243.
- [44] Liu W, Yan X, Chen G, Ren Z. Recent advances in thermoelectric nanocomposites. *Nano Energy* 2012; 1: 42–56.
- [45] Kim DH, Kim C, Ha DW, Kim H. Fabrication and thermoelectric properties of crystal-aligned nano-structured Bi_2Te_3 . *J Alloy Compd* 2011; 509: 5211–5215.

- [46] Zhao LD, Zhang BP, Li JF, Zhou M, Liu WS, Liu J. Thermoelectric and mechanical properties of nano-SiC-dispersed Bi₂Te₃ fabricated by mechanical alloying and spark plasma sintering. *J Alloy Compd* 2008; 455: 259–264.
- [47] Harman TC, Taylor PJ, Spears DL, Walsh MP. Quantum dot superlattice thermoelectric materials and devices. *J Electron Mater* 1999; 28: L1.
- [48] Venkatasubramanian R, Siivola E, Colpitts T, O'Quinn B. Thin-film thermoelectric devices with high room-temperature figures of merit. *Nature* 2001; 413: 597–602.
- [49] Sun X, Lin YM, Cronin SB, Dresselhaus MS, Ying JY, Chen G. Theoretical modeling of thermoelectricity in Bi nanowires. In: *Proceedings of the Eighteenth International Conference on Thermoelectrics*; 29 August–2 September 1999; Cambridge, MA, USA. pp. 394–397.
- [50] Chen TG, Yu P, Chou RH, Pan CL. Phonon thermal conductivity suppression of bulk silicon nanowire composites for efficient thermoelectric conversion. *Opt Express* 2010; 18: 467–476.
- [51] Poudel B, Hao Q, Ma Y, Lan Y, Minnich A, Yu B, Yan X, Wang D, Muto A, Vashaee D et al. High-thermoelectric performance of nanostructured bismuth antimony telluride bulk alloys. *Science* 2008; 320: 634–638.
- [52] Fang F, Opila RL, Venkatasubramanian R, Colpitts T. Preparation of clean Bi₂Te₃ and Sb₂Te₃ thin films to determine alignment at valence band maxima. *J Vac Sci Technol A* 2011; 29: 403–405.
- [53] Jovanovic V, Ghamaty S, Bass JC. New thermoelectric materials and applications. In: *Proceedings of the 13th IEEE Intersociety Conference on Thermal and Thermomechanical Phenomena in Electronic Systems*; 30 May–1 June 2012; San Diego, CA, USA. pp. 1159–1169.
- [54] Jovanovic V, Ghamaty S, Elsner NB, Krommenhoek D, Morris J. New technique for testing performance of thermoelectric quantum well materials. In: *Proceedings of the ASME 2009 Conference on Energy Sustainability*; 19–23 July 2009; San Francisco, California, USA. pp. 317–320.
- [55] Wu Y, Finefrock SW, Yang H. Nanostructured thermoelectric: Opportunities and challenges. *Nano Energy* 2012; 1: 651–653.
- [56] Francoeur M, Vaillon R, Mengüç MP. Thermal impacts on the performance of nanoscale-gap thermophotovoltaic power generators. *IEEE T Energy Convers* 2011; 26: 686–689.
- [57] Dai D, Zhou Y, Liu J. Liquid metal based thermoelectric generation system for waste heat recovery. *Renew Energ* 2011; 36: 3530–3536.
- [58] Leonov V, Vullers RJM. Wearable electronics self-powered by using human body heat: The state of the art and the perspective. *J Renew Sustain Ener* 2009; 1: 701–714.
- [59] Kauzlarich SM, Brown SR, Snyder GJ. Zintl phases for thermoelectric devices. *Dalton T* 2007; 21: 2099–2107.
- [60] He W, Su Y, Wang YQ, Riffat SB, Ji J. A study on incorporation of thermoelectric modules with evacuated-tube heat-pipe solar collectors. *Renew Energ* 2012; 37: 142–149.
- [61] Yao DJ, Yeh KJ, Hsu CT, Yu BM, Lee JS. Efficient reuse of waste energy. *IEEE Nanotechnol Mag* 2009; 3: 28–33.
- [62] Champier D, Bédécarrats JP, Kousksou T, Rivaletto M, Strub F, Pignolet P. Study of a TE (thermoelectric) generator incorporated in a multifunction wood stove. *Energy* 2011; 36: 1518–1526.
- [63] Juanico LE, Rinalde GF. Comparative analysis of photovoltaic and thermoelectric panels for powering isolated homes. *J Renew Sustain Ener* 2009; 1: 107–112.
- [64] Topal ET, Kulah H, Muhtaroglu A. Thin film thermoelectric energy harvesters for MEMS micropower generation. In: *Proceedings of the 2010 International Conference on Energy Aware Computing*; 16–18 December 2010; Cairo, Egypt. pp. 1–4.
- [65] Leonov V, Torfs T, Fiorini P, Van Hoof C. Thermoelectric converters of human warmth for self-powered wireless sensor nodes. *IEEE Sens J* 2007; 7: 650–657.
- [66] Dalola S, Ferrari V, Guizzetti M, Marioli D, Sardini E, Serpelloni M, Taroni A. autonomous sensor system with RF link and thermoelectric generator for power harvesting. In: *Proceedings of the 2008 IEEE International Instrumentation and Measurement Technology Conference*; 12–15 May 2008; Victoria, Vancouver Island, Canada. pp. 1376–1380.
- [67] Samson D, Kluge M, Becker T, Schmid U. Wireless sensor node powered by aircraft specific thermoelectric energy harvesting. *Sensor Actuat A-Phys* 2011; 172: 240–244.
- [68] Ugalde C, Anzures J, Lazaro II. Thermoelectric coolers as alternative transducers for solar energy harvesting. In: *Proceedings of the 2010 Electronics, Robotics and Automotive Mechanics Conference*; 28 September–1 October 2010; Cuernavaca, Morelos, México. pp. 637–641.
- [69] Xi H, Luo L, Fraisse G. Development and applications of solar-based thermoelectric technologies. *Renew Sust Energ Rev* 2007; 11: 923–936.
- [70] Torfs T, Leonov V, Yazicioglu RF, Merken P, Van Hoof C, Vullers RJM, Gyselinckx B. Wearable autonomous wireless electro-encephalography system fully powered by human body heat. In: *Proceedings of the IEEE Sensors* 2008; 26–29 October 2008; Lecce, Italy. pp. 1269–1272.

- [71] Lay-Ekuakille A, Vendramin G, Trotta A, Mazzotta G. Thermoelectric generator design based on power from body heat for biomedical autonomous devices. In: Proceedings of the MeMeA 2009 – International Workshop on Medical Measurements and Applications; 29–30 May 2009; Cetraro, Italy. pp. 1–4.
- [72] Koplów M, Chen A, Steingart D, Wright PK, Evans JW. Thick film thermoelectric energy harvesting systems for biomedical applications. In: Proceedings of the 5th International Summer School and Symposium on Medical Devices and Biosensors; 1–3 June 2008; Hong Kong, Hksar, China. pp. 322–325.
- [73] Kucukkomurler A. Thermoelectric powered high temperature wireless sensing and telemetry. In: Proceedings of the 4th IEEE Conference on Industrial Electronics and Applications; 25–27 May 2009; Xi'an, China. pp. 1080–1086.
- [74] Dalola S, Ferrari V, Guizzetti M, Marioli D, Sardini E, Serpelloni M, Taroni A. Autonomous sensor system with power harvesting for telemetric temperature measurements of pipes. *IEEE T Instrum Meas* 2009; 58: 1471–1478.
- [75] Park A, Yoo J, Kim S. A thermoelectric generation waste heat recovery system using engine coolant for light-duty ICE vehicles. In: Proceedings of the 2010 International Conference on Electrical Machines and Systems; 10–13 October 2010; Incheon, South Korea. pp. 2012–2015.
- [76] Karri MA, Thacher EF, Helenbrook BT. Exhaust energy conversion by thermoelectric generator: Two case studies. *Energy Convers Manage* 2011; 52: 1596–1611.
- [77] LaGrandeur J, Crane D, Hung S, Mazar B, Eder A. Automotive waste heat conversion to electric power using skutterudite, TAGS, PbTe and BiTe. In: Proceedings of the 2006 International Conference on Thermoelectrics; 6–10 August 2006; Vienna, Austria. pp. 343–348.
- [78] Hasebe M, Kamikawa Y, Meiarashi S. Thermoelectric generators using solar thermal energy in heated road pavement. In: Proceedings of the 2006 International Conference on Thermoelectrics; 6–10 August 2006; Vienna, Austria. pp. 697–700.
- [79] Torfs T, Leonov V, Van Hoof C, Gyselinckx B. Body-heat powered autonomous pulse oximeter. In: Proceedings of the IEEE Conference on Sensors; 22–25 October 2006; Daegu, Korea. pp. 427–430.
- [80] Francioso L, De Pascali C, Farella I, Martucci C, Perrone A. Flexible thermoelectric generator for wearable biometric sensors. In: Proceedings of the IEEE Conference on Sensors; 1–4 November 2010; Kona, HI, USA. pp. 747–750.
- [81] Wies RW, Johnson RA, Aspnes J. Design of an energy-efficient standalone distributed generation system employing renewable energy sources and smart grid technology as a student design project. In: Proceedings of the IEEE Power and Energy Society General Meeting; 25–29 July 2010; Minneapolis, MN, USA. pp. 1–8.
- [82] Rinalde GF, Juanico LE, Tagliavere E, Gortari S, Molina MG. Development of thermoelectric generators for electrification of isolated rural homes. *Int J Hydrogen Energy* 2010; 35: 5818–5822.
- [83] Kusnierkiewicz DY, Fountain G, Guo Y, Hersman CB. The new horizons mission to the Pluto system and the kuiper belt. In: Proceedings of the IEEE Aerospace Conference; 1–8 March 2008; Big Sky, MT, USA. pp. 1–10.
- [84] Xie J, Lee C, Feng H. Design, fabrication, and characterization of CMOS MEMS-based thermoelectric power generators. *J Microelectromech S* 2010; 19: 317–324.
- [85] Leonov V, Su J, Vullers RJM. Calculated performance characteristics of micromachined thermopiles in wearable devices. In: Proceedings of the Symposium on Design Test Integration and Packaging of MEMS/MOEMS; 5–7 May 2010; Seville, Spain. pp. 391–396.
- [86] Nagayoshi H, Tokumisu K, Kajikawa T. Evaluation of multi MPPT thermoelectric generator system. In: Proceedings of the 26th IEEE International Conference on Thermoelectrics; 3–7 June 2007; Jeju, Korea. pp. 318–321.
- [87] Cao D, Peng FZ. Multiphase multilevel modular DC–DC converter for high current high gain TEG application. In: Proceedings of the IEEE Energy Conversion Congress and Exposition; 12–16 October 2010; Atlanta, USA. pp. 4230–4237.
- [88] Kim RY, Lai JS. Aggregated modeling and control of a boost–buck cascade converter for maximum power point tracking of a thermoelectric generator. In: Proceedings of the Twenty-Third Annual IEEE Applied Power Electronics Conference and Exposition; 24–28 February 2008; Austin, TX, USA. pp. 1754–1760.
- [89] Kim RY, Lai JS. A seamless mode transfer maximum power point tracking controller for thermoelectric generator applications. *IEEE T Power Electr* 2008; 23: 2310–2318.
- [90] Doms I, Merken P, Van Hoof C. Comparison of DC–DC-converter architectures of power management circuits for thermoelectric generators. In: Proceedings of the European Conference on Power Electronics and Applications; 2–5 September 2007; Aalborg, Denmark. pp. 1–5.